

**PRONELLO**

**SOFTWARE  
OPERATION HANDBOOK**

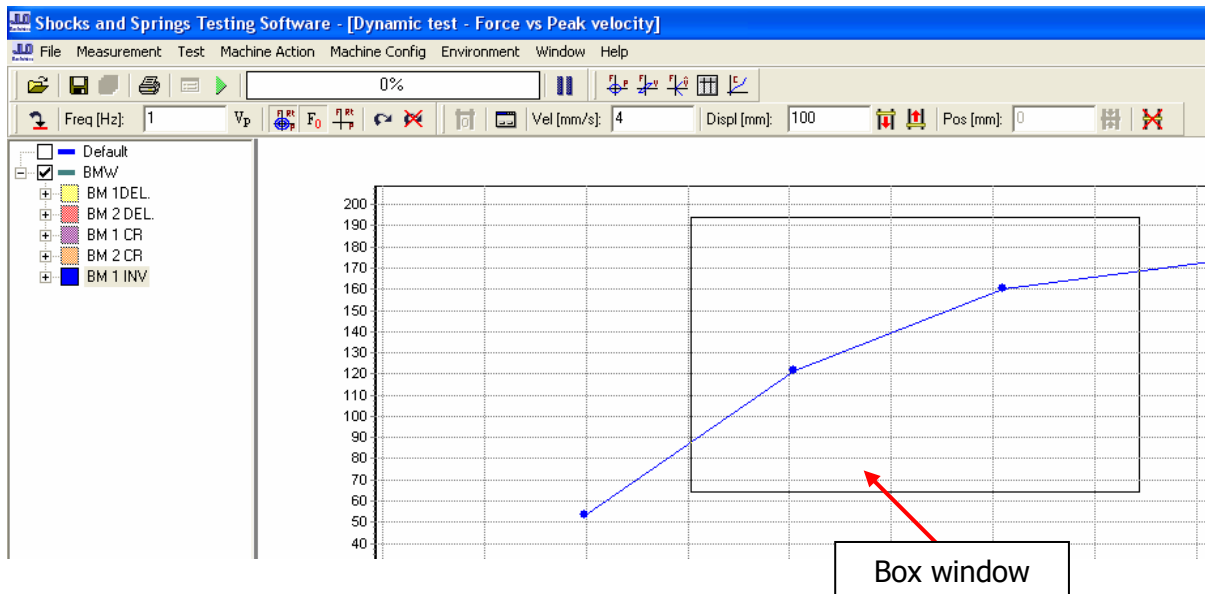
**Chapter 4**

**TEST GRAPHS**

#### 4-1- Zoom in/out:

Zoom IN: Within the graph area, click and drag the box down and to the right to enclose that are you want to zoom in on.

Zoom OUT: Within the graph area, click and drag the box up and to the left.

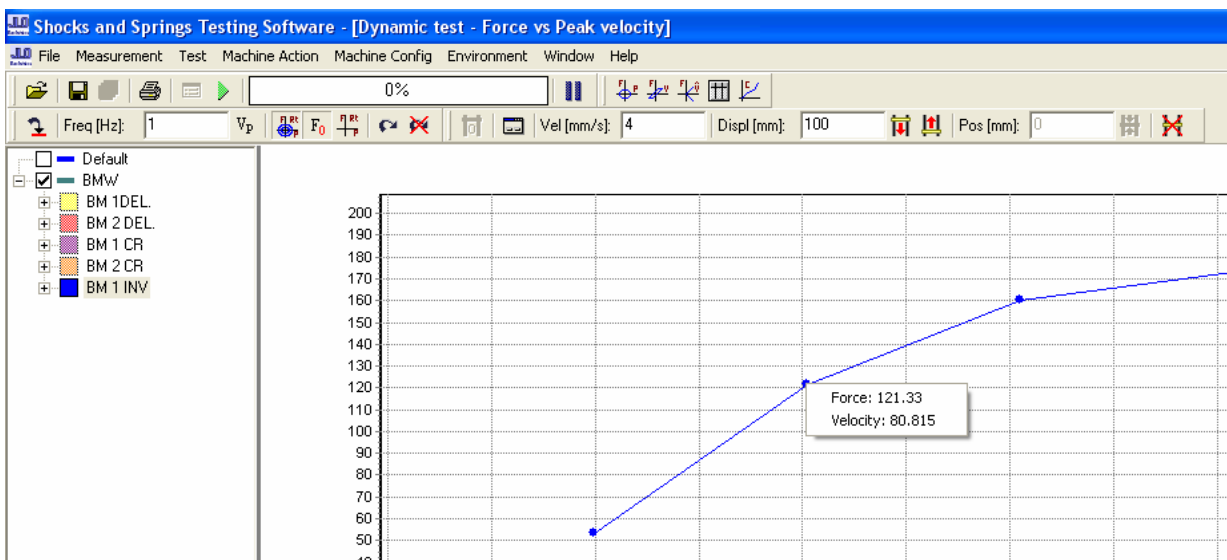


#### 4-2- Pan:

Within the graph area, use the right mouse button to pan. To reset the view, use the Zoom Out function. (See section 4-1- Zoom in/out)

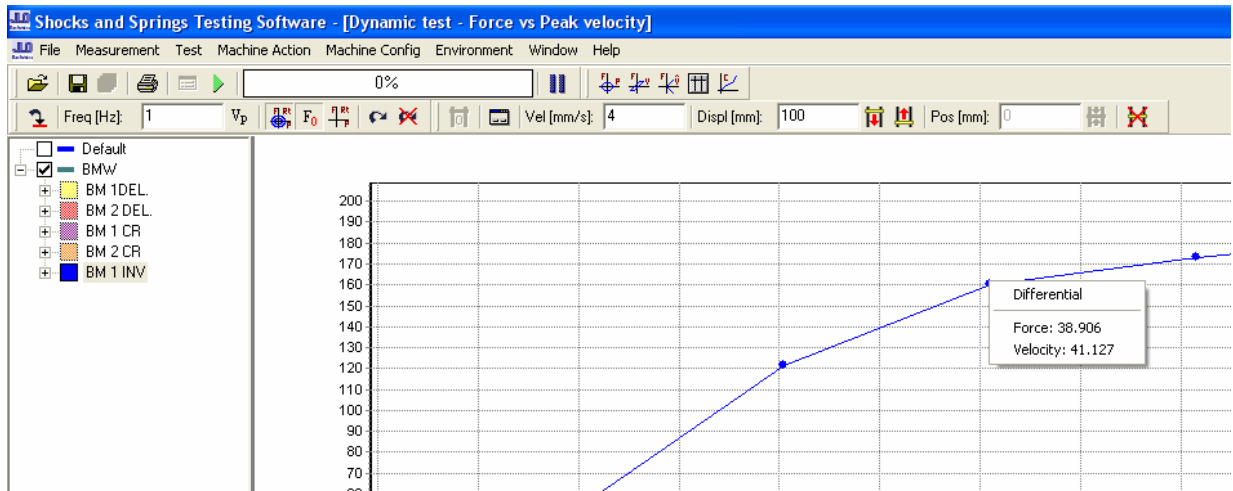
#### 4-3- Data point information:

Right click any data point on the curve to view force and velocity information for that point. Individual points can be easily identified by selecting "Points" in the right click menu of an individual test. (See section 3-2-3-Points)



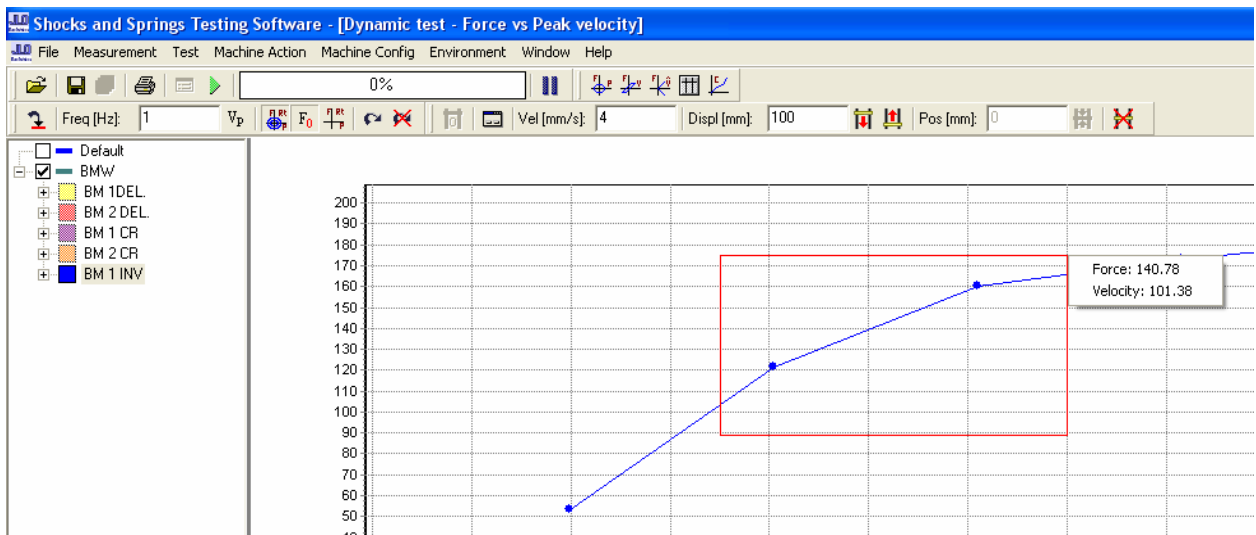
#### 4-4- Data point differential:

To view the differential between two data points, right click the first point. Then hold “CTRL” and right click the second point. The differential velocity and force are displayed.



#### 4-5- Data point average:

To view the average force and velocity of a particular portion of the curve, hold the “SHIFT” key and drag a box around the desired portion of the curve.



#### 4-6- Scaling the axis:

To set the scale of the X and Y axis of the graph, click any area of either axis line. If Auto is selected, the graph will adjust the scale based on the visible graphs.

